



BYO

IPAD PROGRAM

2026



*A Great Place to Grow,
A Greater Place to Learn*

TABLE OF CONTENTS



02

Teaching and Learning Vision

03

iPads within the school environment

05

iPad model specifications

06

iPad protection, accessories, finance and insurance

08

Set up procedures

09

School Focus settings

11

Recommended settings & Intune

13

App Lists

15

General Care

17

Cyber safety

18

iPad support

19

iPad Terms of Use and Participation Agreement



TEACHING AND LEARNING VISION



Supporting future-focused learning

Eagle Junction State School's BYO iPad Program (Years 3 – 6) facilitates the development of knowledge and skills necessary for the 21st century world, including digital literacy, innovative and creative thinking, effective communication and productivity.

At Eagle Junction, we are committed to the use of technology to enhance teaching and learning. We guide our students to use technology safely and responsibly. We aim to engage, challenge and empower our learners, to become confident, creative and critical citizens within our global community.

iPads as a tool for learning

iPads provide a powerful and age-appropriate platform for engaging with digital literacies within the primary school setting. The Eagle Junction State School BYO iPad Program:

- Promotes digital literacy, the knowledge and skills students need to create, manage, communicate and investigate data, information and ideas, and solve problems.
- Provides opportunity for contemporary digital pedagogies across the curriculum, as part of a balanced approach combined with traditional teaching methods.
- Encourages and extends student engagement and personalisation of learning by creating student agency in how work is completed.
- Provides access to rich learning resources and educational materials for learning to happen anywhere, anytime.
- Strengthens the links between home and school, giving families the opportunity to connect with their child's learning.

IPADS WITHIN THE SCHOOL ENVIRONMENT



At Eagle Junction, iPads are used as tool for learning under teacher supervision within the classroom. iPads are used for the following purposes at school:

- To complete class work, including word processing, multimedia projects, assigned online activities or use of school-approved learning apps, etc., as instructed by the teacher.
- To provide adjustments to tasks, including use of assistive technologies and opportunities for extension, to allow all students to access the curriculum in a meaningful way.
- For supervised research linked to the curriculum.
- To access approved online references and resources.

Equity

The BYO Program is an **opt-in program**. Each classroom is equipped with school-owned devices for those families who do not wish to participate in the program, to ensure that no child is disadvantaged during their education. Please note that these iPads may be shared between students and will not be able to be taken home from school.

BYO iPad expectations

- ✓ iPads are to be brought to school every day, fully charged.
- ✓ All school-apps and iOS updates are installed.
- ✓ iPads are enrolled in Intune (Department of Education's Mobile Device Management platform).
- ✓ iPads are clearly labelled and have a current photo saved as the lock-screen wallpaper to assist with identification.
- ✓ All tabs in web browsers are closed before coming to school.
- ✓ A School Focus is to be set for school hours, limiting access to only school-approved apps.
- ✓ Personal apps are stored on separate pages and are not to be accessed during school hours.
- ✓ Only age-appropriate personal apps are installed on iPads (not to be used during school hours).

Rules for all students when using technology at school

- ✓ We use iPads during class learning time only, not at lunchtime or before or after school.
- ✓ We use only school-approved apps for learning when at school.
- ✓ We only use internet searching only when directly related to school work, under teacher instruction.

- ✓ We use the school email service to communicate with teachers and peers, under teacher instructions.
- ✓ We keep personal information (usernames or passwords) private and we do not share devices.
- ✓ We gain consent if we take photos and recordings of others and only do so under teacher instruction as part of a school assigned task.
- ✓ We do not use any other communication platform or Airdrop to communicate with other students whilst at school.
- ✓ We do not message or email between home and school during home hours.
- ✓ Social media is not permitted on school grounds.

At Eagle Junction, we are a community of learners who respect and protect ourselves and each other when using technology. In order to ensure responsible technology use in the classroom, the following expectations will be shared in all classrooms for students and teachers to refer to:



Student Agreement



FOR RESPONSIBLE IPAD USE

- 1 I will bring my charged iPad to school every day, with all web pages and apps closed.
- 2 I will set a School Focus to reduce distractions.
- 3 I only use school approved apps and websites during class time when instructed by my teacher.
- 4 I will turn off my screen to listen to the teacher.
- 5 I will not take photos or videos of another student, unless instructed by a teacher.
- 6 I will not communicate with other students or family members during school hours using iMessage or AirDrop.
- 7 I will handle my iPad safely and store it in my bag when travelling to and from my classroom.
- 8 I will always treat my classmates with respect when using technology.



When using iPads, I follow the
School Rules of being
Respectful, Responsible and Safe
 and I use the **EJ Learning**
Powers to guide my learning.



IPAD MODEL SPECIFICATIONS



iPads brought to school under the BYO iPad Program must be capable of running the latest version of the operating system (iOS – currently **iPadOS 26**). Families have the option to either:

1. **Purchase a new iPad:** we recommend an 11th Gen/10th Gen iPad in standard size (11inch)
OR
2. **Use a prior owned iPad that meets the following requirements:**

Acceptable models

<i>Device</i>	<i>Wi-Fi Model</i>	<i>Wi-Fi & Cellular Model</i>
iPad 8 th Generation and later	YES	YES – NO SIM
iPad Air 4 th Gen and later	YES	YES – NO SIM
iPad Pro [^] 3 rd Gen and later	YES	YES – NO SIM

[^]Standard screen size only (10.5 & 11 inch models).

Incompatible models

<i>Device</i>	<i>Wi-Fi Model</i>	<i>Wi-Fi & Cellular Model</i>
iPad 1 st – 7 th Gen	NO	NO
iPad Mini	NO	NO
iPad Air – 1 st – 3 rd Gen	NO	NO

A minimum storage of 64GB is recommended.

Mobile Network (3G – 5G) Connectivity

Devices that have cellular network connectivity abilities are permitted, however we have a **strict no-SIM card policy**. This is to ensure that students are only able to access the internet via the Education Queensland's Managed Internet Service, to ensure that appropriate internet filters are applied to all students while using technology at school.

Case recommendations

We strongly recommend a robust case and a **tempered glass screen protector** to minimise damage. Please consider purchasing a good quality **heavy-duty, shock-proof case**, to protect your investment. Avoid novelty cases or slimline cases designed for adult-users, as they are unlikely to protect from damage in case of accidents.

We also recommend that iPads travel to and from school in the **EJSS Library Bag** (used for Prep – Year 2 students for library borrowing). This bag provides an extra layer of protection and may help to prevent from accidental water damage.



Recommended case from IT
(Bluetooth Keyboard Folio with Pencil
Holder for iPad 10-11th Gen)*



*[Tempered glass screen
protector](#)*



Library bags are recommended

**Please note: EJ IT is purchasing [these cases](#) for the school's new 10th Gen iPads. The discounted price applies only to school purchases. The rate for parent purchases is also listed on the website.*

Headphones

We recommend students use **over-ear headphones**, ideally with a **built-in microphone** to assist with audio recording quality. The Tartan Trader stocks our recommended brand of headphones, which we have found to represent excellent quality for money and durability. Please note that you will need to purchase a connector depending on your iPad model (e.g., lightning to 3.5mm headphone jack connector for Gen 9 or prior or a USB-C to 3.5mm headphone jack connector for Gen 10). These connectors protect from accidental headphone jack snapping in the ports and allow for connection across the different iPad models.



Optional accessories

Students may wish to bring **optional** accessories such as a stylus pen and/or a Bluetooth keyboard. Students are welcome to bring these accessories but are not required to do so.



Finance

The school is not able to enter into financial agreements with families for purchasing an iPad.

Insurance

If you are interested in insuring your child's device, please contact for your preferred insurance company about personal insurance options, including use at school. Read terms and conditions carefully to ensure you understand the level of cover provided.

Damages

All devices are monitored by teachers at school and rules are in place to prevent foreseeable problems and damage. However, from time to time, accidents may occur. If any damage to a device is through negligence of the school, the school will cover the cost of repair. If damage is caused by deliberate or careless actions of a student (owner or others), the costs of repair will be passed onto those involved, although NO guarantees for reimbursement can be provided. The decision around the responsibility for repair costs is at the discretion of the Principal.

SET UP PROCEDURES



Passcodes

A passcode is required to be set on the students iPad to install Microsoft Intune Company Portal, the Department's mobile device management system.

Settings > General > Touch ID & Passcode > Turn Passcode On > Passcode Options (optional 4-digit numeric code or a 6-digit code)

Create a child Apple ID

All students are required to have their own Apple ID. This ensures other family members personal or work files, apps, photos and messages do not sync with their device and so that parental controls can be enabled through Family Sharing. [Children under 13 years of age require a child Apple ID](#). This can be set up under Apple's Family Sharing option.



**Creating a
child's Apple ID**

Family Sharing (optional)

Family Sharing allows for app store purchases to be shared with up to six family members without sharing accounts. It allows for greater parental control over screen time, content access, and App store activity.

**Set up Family
Sharing**

Rename the device

Please ensure that your child's iPad is appropriately named with their first name, initial and class (e.g., **Joe B 4C**).

Settings > General > About > Name

SCHOOL FOCUS SETTINGS

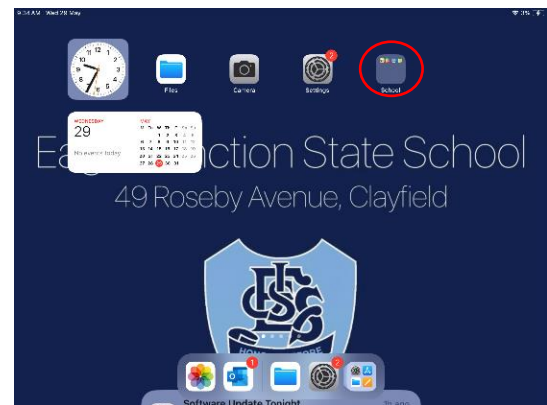


A School Focus is required be activated on BYO iPads during school hours to minimise the disruption of personal (non-school) apps during school hours, including app notifications and messages on iMessage. This setting does not completely block access to non-school apps, but it does silence notifications from non-school apps (including iMessage) and reduces the number of home screens available.

Create a 'School' folder

1. Remove non-school apps from the *first home screen* by dragging to the dock and removing to another screen.
2. Leave the Files and Camera app on the first screen.
3. Create a School Apps folder containing all school apps.
4. Change wallpaper and lock-screen to be a selfie of the student's face. Take a sensible selfie.

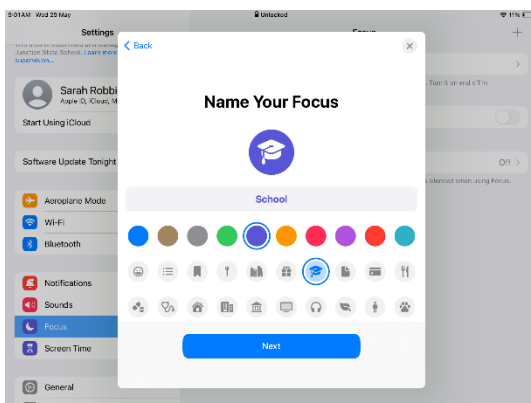
Upload > Use as Wallpaper



Setting a School Focus

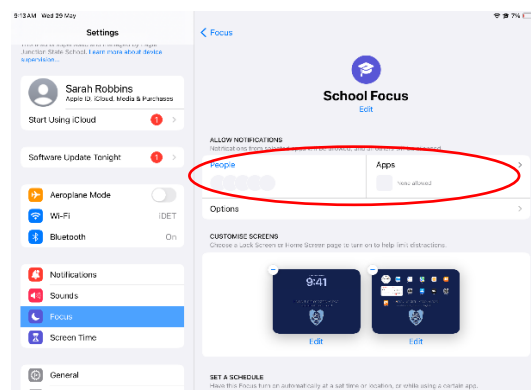
Step 1.

Settings > Focus > '+' > Custom > Type "School" > Select mortarboard icon > Next



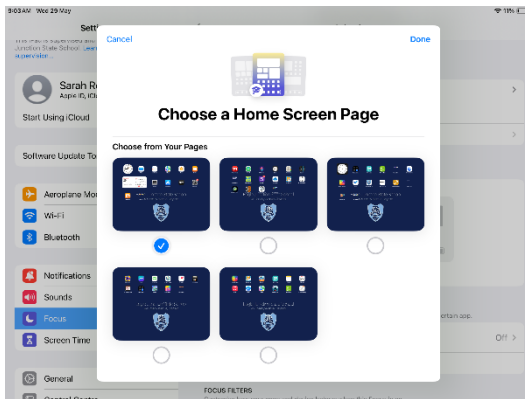
Step 2.

Ensure no people or Apps are selected under 'Allow Notifications'.



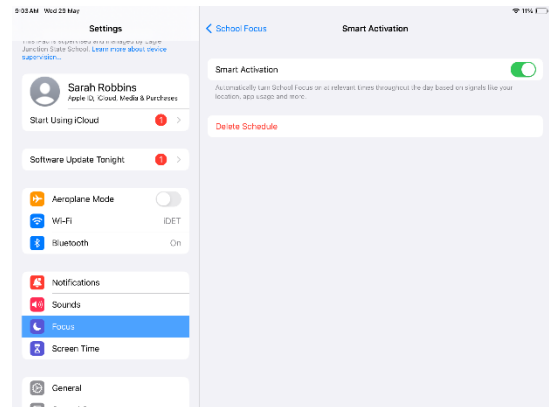
Step 3.

Customise screens > Choose only the first home screen that contains the school apps folder > Done.



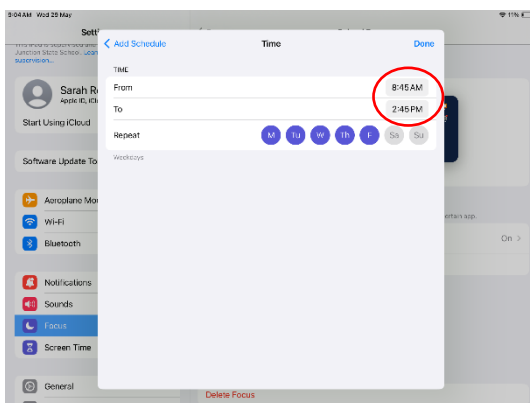
Step 4.

Smart Activation > (Slide to green = on) > School Focus



Step 5.

Add Schedule > Time > Set time from 8:45 to 2:45pm > Select Monday – Friday > Done > Add Schedule



Schools focus icon should now automatically display when at school during school hours.
It is recommended that you regularly check that School Focus has not been altered or deleted.

RECOMMENDED SETTINGS



Set iPad language to English

Settings > General > Language & Region > iPad Language – English

Enable - Dictionary

Settings > English (UK)

Enable - Dictation

Settings > General > Keyboards > Enable Dictation

Enable - Predictive Text

Settings > General > Keyboards > Predictive

Enable - Speak Selection

Settings > Accessibility > Spoken Content > Speak Selection (Slide to green = on)

Disable - iCloud Drive

iCloud is not currently supported on EQ Networks due to volume constraints.

Settings > Apple ID (Name top left) > iCloud > iCloud Drive

Disable - iCloud Photos

Settings > Photos > iCloud Photos (slide to grey = off)

Disable – Offload Unused Apps

Settings > App Store > Offload Unused Apps (slide to grey = off)

Disable – Automatic downloads

Settings > App Store > Automatic downloads > Apps, App Updates, In-App Ratings & Reviews, Offload Unused Apps (Select to grey = off).

Disable – Background App Refresh

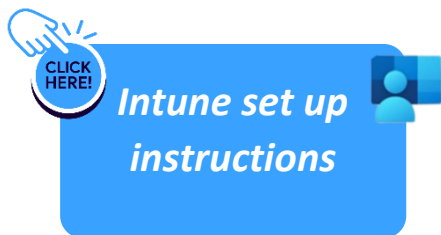
Settings > General > Background App Refresh (Slide to grey = off)

Disable – iCloud emails

Settings > iCloud > turn off Mail

Enrolling your device into Intune

The Department of Education uses Microsoft Intune Company Portal (Intune) as its mobile device management tool. Intune allows the department to distribute a wireless network profile and curriculum related applications to student's BYO devices.



To complete the setup, you will need your child's MIS ID and Passwords. These will be provided in the first week of Term 1.

Internet use at school

Internet access is provided by Education Queensland's Managed Internet Service (MIS). This provides students with:

- Content-filtered internet access managed by Education Queensland
- Virus-filtered email

For further details of acceptable and unacceptable use of ICT within the school setting, please refer to the *Eagle Junction Student Code of Conduct*.

Students and guardians must agree to follow the *iPad Terms of Use and Participation Agreement* and *Eagle Junction State School ICT Agreement*.

E-Mail Use

Students have access to a Department of Education email account, which they can access from home and school for the purposes of learning. Email traffic is monitored for inappropriate use, content and language.

VPNs

The use of 3rd party VPN software is prohibited on BYO iPads. This is to ensure all students are protected by the Department's filtering software to ensure safe and age-appropriate internet access.

APP LISTS



You may choose to download these apps individually through the App Store, or you can wait for your child to be enrolled in Intune. All free apps will be listed and can be downloaded through Intune. Paid apps (Book Creator for iPad) must be purchased through the App store. Students are able to use their MIS IDs to connect to the Microsoft Office Suite for free.

All students

Apple apps



Pages
Free



Keynote
Free



Numbers
Free



Garage Band
Free



iMovie
Free



Freeform
Free

Microsoft apps



Intune
Free



Word
Free



Excel
Free



PowerPoint
Free



OneNote
Free



OneDrive
Free

Literacy apps



Book Creator
\$5.99



Reading Eggs
Free



WordWeb
Free



A+ Spelling
Free

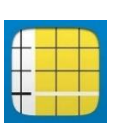
Numeracy apps



Matific
Free



Number Pieces
by MLC
Free



Number Pieces
by MLC
Free



Pattern Shapes
by MLC
Free



Math Clock
by MLC
Free



Fractions by
MLC
Free

Numeracy apps (continued)



Geoboard MLC
by
Free



Calculator –
for iPad
Free

Japanese apps



Free



Free



Free

Other apps



Google Earth
Free



Scratch Jr.
Free



ChatterPix
Free



Paper
Free

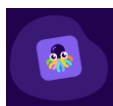
Year 3 apps



Seesaw
Free



Naplan
Free



Octostudio
Free



Sora
Free



Outlook
Free



IXL
Free

Year 4+ apps

Year 5+ apps



Teams
Free



Naplan
Free



Mathigon
Free



Lens
Free

Year 6 apps



Canva
Free

GENERAL CARE



Students are responsible for the general care of their iPad.

General Precautions

- It is recommended that food or drink should not be next to your iPad when in use.
- Cords, cables, and removable storage must be inserted into, and removed from the iPad carefully.
- The iPad should never be left in a car or any unsupervised area.

Transporting the iPad

- The iPad should always be within a protective case when in transit.
- It is recommended that students do not carry drink bottles of any kind inside their backpacks.

Screen Care

The screen can be damaged if subjected to rough treatment. They are particularly susceptible to damage from excessive pressure and can be costly to repair.

- Do not lean on or place anything near the iPad that could put pressure on the screen.
- Do not place anything in the carry case that will press against the cover.
- Clean the screen with a soft, dry cloth or anti-static cloth.
- Consider investing in a screen protector.

Battery Maintenance

To optimise running time of the iPads, follow these simple tips:

- Reduce the screen brightness to a comfortable level
- Disable connectivity such as WiFi and Bluetooth when not in use
- Lock the iPad screen when not in use
- Close all running apps when not in use

Occupational Health and Safety

Students are advised to consider the following advice when using their iPad.

- Taking regular rest breaks (at least every 20 minutes; more often if the setup is not ideal to allow muscles and vision to recuperate).
- Working in an environment free from glare.
- Using the iPad on a desk rather than on the lap whenever possible.
- Changing the viewing angle to minimise the need to bend the neck.
- Using a chair that maintains good posture.

Potential injuries that can occur through using iPads include:

- Occupational Overuse syndrome (OOS) [also known as repetitive strain injury (RSI)] as a result of sustained unnatural postures and/or prolonged tension on muscles, tendons, and other soft tissues.
- Eye strain through use in environments where there is poor lighting, glare, or reflection, and as a result of straining to view details on small screens.
- Tripping hazards can also exist where the mobile device has external cables attached such as mains power cords or external drive connectors.

The school is responsible for ensuring that regular rest breaks and appropriate environments for learning are provided to minimise any potential risks through iPad use in the classroom.

CYBER SAFETY



We recommend the following links for parents to learn more about how to keep your children safe when they are online:



*Online Awareness:
Information for
parents & carers*

*eSafety
Commisioner:
Online Safety*

*Online Safety in
QLD State Schools*

*Raising Children:
Internet Safety
9 - 11 years*

IPAD SUPPORT



Parental Controls and Restrictions can be enabled through **Screen Time** under Settings or through **Family Sharing**. We recommend investigating these settings to ensure that your child's device can only access age-appropriate content when they are connected to the internet at home or places other than school.

Content and Privacy Restrictions (under Screen Time) allows for App Store activity to be limited or disabled, for setting age-appropriate web content restrictions and for setting age limit restrictions on non-school apps.

Downtime (under Screen Time) allows for screen time limits to be set at home. Selected apps can be made available for a specified period of time, after which access will be locked.

Communication Limits (under Screen Time & Contacts or Family Sharing) allows for contact lists to be managed and locked, ensuring that your child can only message and receive messages from approved contacts.

The following links may be helpful in setting up your child's iPad. We recommend investigating:



iPad Support

- Set up your iPad
- Back up your data
- Password reset instructions

Parental Controls with Family Sharing

- Parental controls
- Receive warnings about sensitive content
- Set up Screen Time for a child
- How to video: [How to set up family sharing](#)

Parental Controls on your child's iPad

- Set content and privacy restrictions
- Restrict App Store activity
- Restrict sensitive content
- Communication limits

Screen Time on iPads

- Setting Screen Time restrictions

IPAD TERMS OF USE AND PARTICIPATION AGREEMENT



Eagle Junction State School iPad Terms of Use and Participation Agreement (Years 3 – 6)

Responsibility for property

I will:

- Bring my BYO iPad to school **every** day, fully charged.
- Store my iPad in my schoolbag while coming to school and going home, and I will not use it while waiting before and after school.
- Protect my iPad by carrying it safely and using it at a table or in my lap.
- Immediately report any damage to teachers and families.

Responsibility for learning

I will:

- Only use an iPad as a tool for learning, as directed by my teacher.
- Only use school-approved apps whilst at school.
- Only visit websites or use search engines as instructed by a teacher for learning purposes.
- Set up a **School Focus** to prevent notifications coming through between 8:50am – 2:45pm from all non-school apps.
- Not use iMessage to communicate with other students or my family during school hours.
- Only have age-appropriate apps installed on my iPad.

Responsibility for safety and security

I will:

- Only connect to the school's network (Managed Internet Service) while at school.
- Not access cellular (3G – 5G) networks while at school, if I have a cellular iPad.
- Only use the school's network and email respectfully and for educational purposes.
- Protect my username and passwords by not sharing with anyone.
- Never share my personal information online, including my full name, personal details, images of myself or others, my school uniform or logo, video or audio recordings.
- Not take photos, video or audio recordings, unless directly instructed by a teacher.
- I will follow the school rules of being **Respectful, Responsible, Safe, Resilient and Confident** when using digital devices both at school and at home.

I am aware that my digital behaviours (including web activity and school emails) when using the Managed Internet Service (MIS) are monitored by the school's MIS administrators, to ensure safe and appropriate use.

I understand that if the above conditions are breached:

- I may lose the privilege of using my iPad at school for the session, day, week or longer.
- I may be required to complete my work using non-digital resources.
- I may be subject to disciplinary action according to the Student Code of Conduct.



Eagle Junction State School
Years 3 – 6 BYO iPad Program 2026

Student name: _____ Class: _____

Device intentions

☐ Student to participate in the BYO iPad program.

OR

☐ Student to borrow a school iPad. We understand this will be a shared device and will remain at school.

iPad Terms of Use and Participation Agreement

☐ We have read and agree to abide by the iPad Terms of Use and Participation Agreement.

Student signature: _____

Parent name: _____

Parent signature: _____

Date: ____ / ____ / ____